

## ANNEX WITH DETAILED RESEARCH RESULTS

# A STUDY ON ENVIRONMENT, SOCIAL AND GOVERNANCE DISCLOSURE IN THE CASE OF THE PACKAGING SECTOR IN ROMANIA

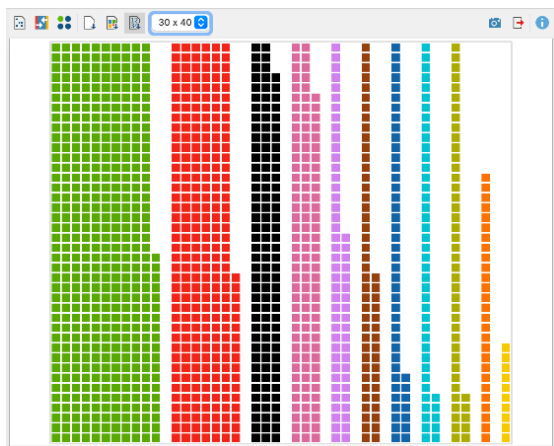
**Owner:** Prof. Anca DRAGHICI

Politehnica University of Timisoara, Faculty of Management in Production and Transportation, [anca.draghici@upt.ro](mailto:anca.draghici@upt.ro)

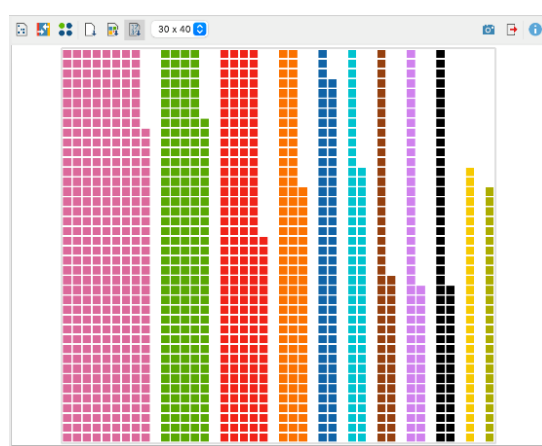
The following graphs represent the results of a semantic analysis of the Environment, social and governance (ESG) reports content conducted in the case of five Romanian companies from the packaging industry. The was analyzed based on predefined codes (and using MAXQDA software application, <https://www.maxqda.com/>).

These graphs are the support for the research results interpretation and implications.

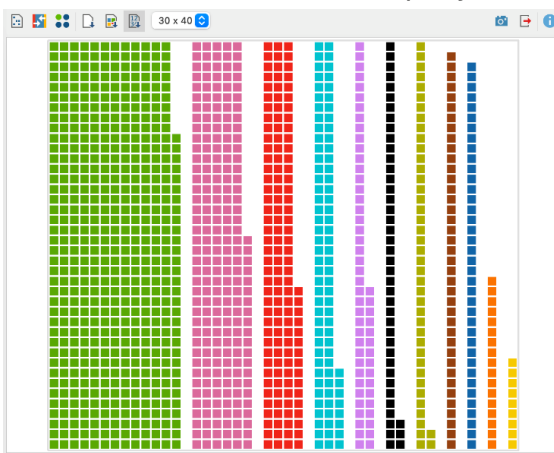
# 1. Research results of the documents' portrait (for the five ESG Reports)



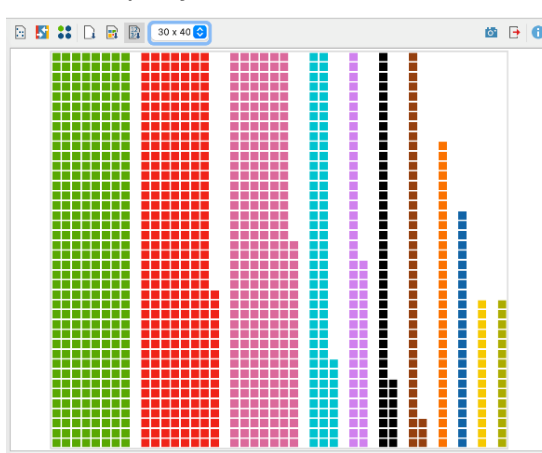
Company A



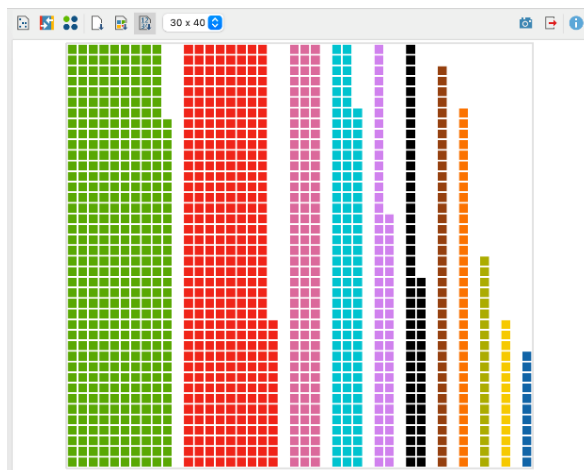
Company B



Company C

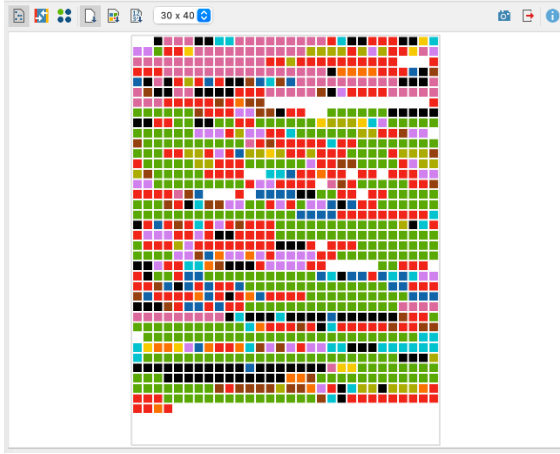


Company D

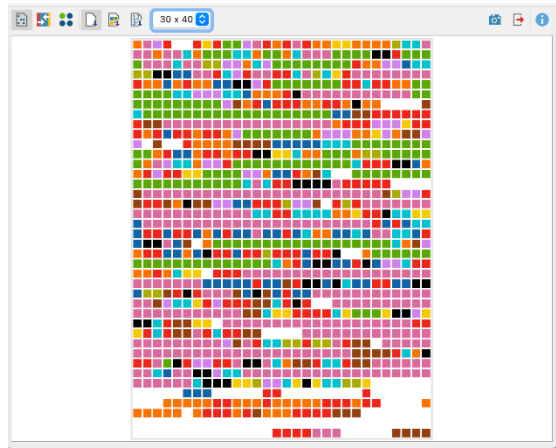


Company E

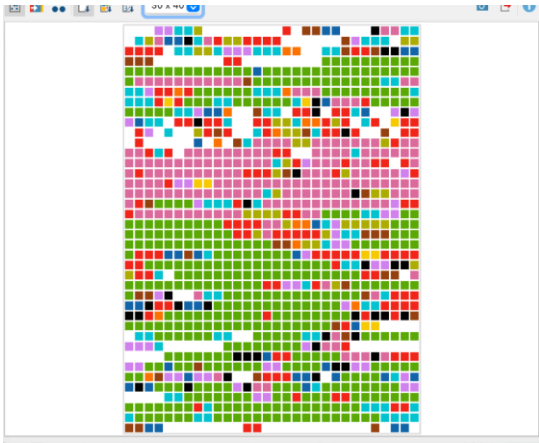
**Graph Set 1.** The Documents General Portrait by Code Frequency.



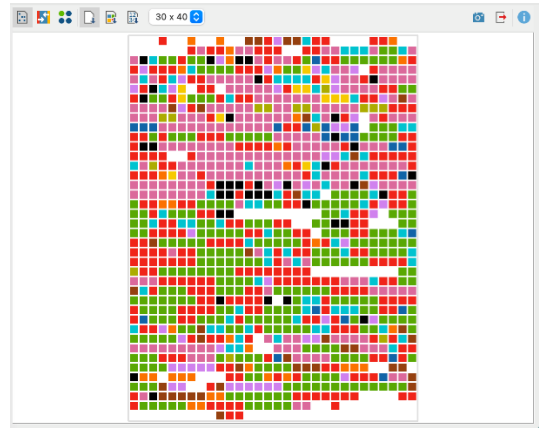
Company A



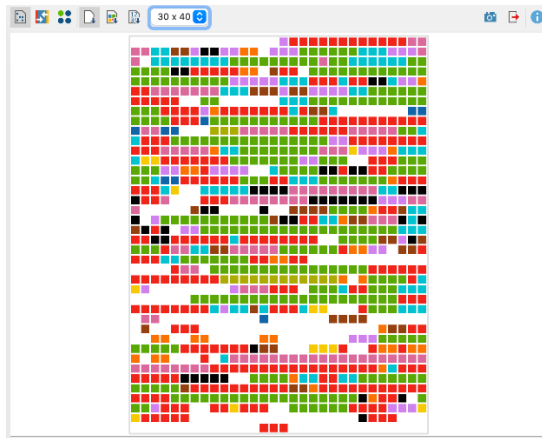
Company B



Company C



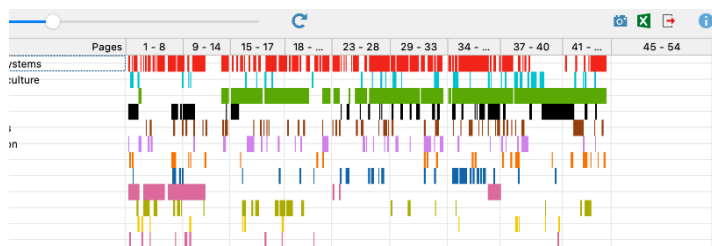
Company D



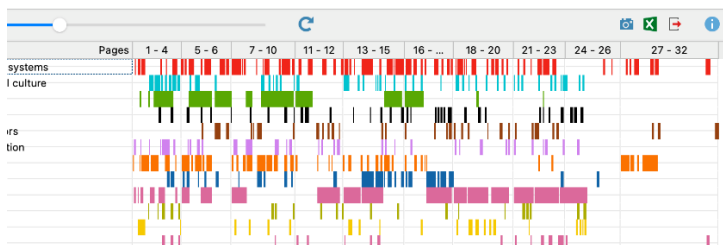
Company E

**Graph Set 2.** The Portrait of the Documents Based on Coded and Uncoded Segments in Order of Occurrence.

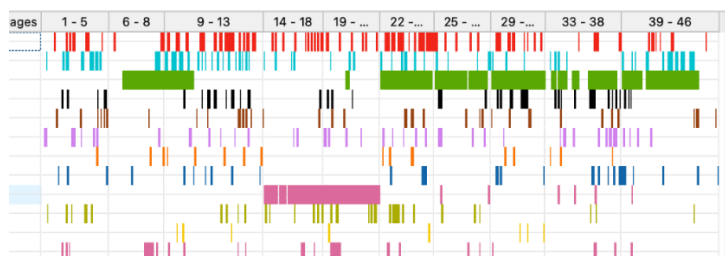
## 2. In Deep Analysis based on Codeline Function



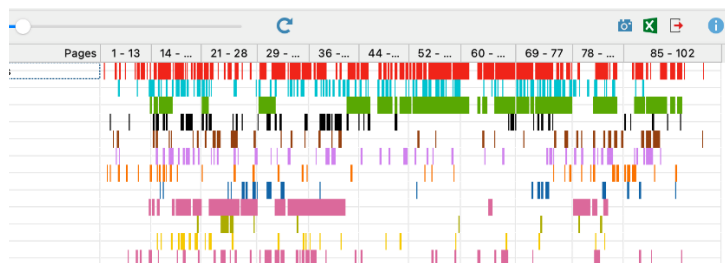
Company A



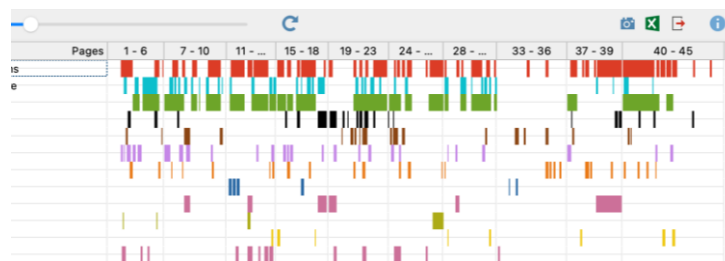
Company B



Company C



Company D



Company E

**Graph Set 3.** Analysis of codelines for the packing companies considered.